



ESCAPE TRAILER

READY FOR AN EPIC **ESCAPE**

When our founders started refurbishing old fiberglass trailers in 1993, they were focused on one thing: the confidence of owners, their family, and their friends to escape carefree.

WHEN YOU BUY AN ESCAPE, YOU'LL FIND OUT WHY OUR OWNERS ARE SO CONFIDENT.

With an ultra-tough exterior, ultra-customizable interior, and engineering designed to be light enough to tow with an everyday SUV and pickup, our trailers are built to be reliable, comfortable, and durable.

How do we make sure we deliver on this promise of confidence? You can only buy directly from us, not a third-party dealer.

That way, we're sure every trailer sent out is worthy of the Epic Escapes it will be a part of.



We put so much care into every trailer because your adventures should be complimented, not bogged down, by your trailer. If that sounds good to you, get ready to

ESCAPE CAREFREE



Escape 5.0



Escape 5.0

Compact Luxury, Big Comfort. Hitch it to your mid-size truck and enjoy your adventure.

Compact yet roomy, the 21'2" fifth wheel trailer is effortlessly towed by a mid-sized truck. With separate living and sleeping areas and generous ceiling height, it's a true home on wheels. Smart storage solutions under the steps and dinette bench ensure maximum space efficiency.

Exterior Length (add 6" for spare tire)	21'2"
Top of Open Maxx Fan	9'8.5"
Exterior Width	7'4"
Interior Height	6'4" to 7'
Interior Length	19'9"
Freshwater Cap.	28 gallon
Blackwater Cap.	30 gallon
Greywater Cap.	28 gallon
Propane Gas Cap.	2 x 20 lbs
Hitch Weight	646 lbs
Axle Weight	3264 lbs
Total Dry Weight	3910 lbs
GVWR	5500 lbs

HIGHLIGHTS INCLUDE



21'2" FIFTH WHEEL
21'2" L X 7'4" W X 9'7" H



3910 LBS
DRY WEIGHT



5500 LBS
GVWR



4 PEOPLE
SLEEPING CAPACITY

Escape 23



Escape 23

The newest member of the Escape family.


The 23 keeps the lightweight, durable, and fully customizable traditions of its older siblings while introducing multiple new features. With acrylic windows, a touchscreen interface, and up to four built-in lithium batteries for trips truly off the grid, the Escape 23 doesn't just update our trailers to the present: it sends it into the future.


Exterior Length (add 6" for spare tire)	24'7"
Top of Open Maxx Fan	8'10"
Exterior Width	8'
Interior Height	6'5"
Interior Length	19'4"
Freshwater Cap.	42 gallon
Blackwater Cap.	40 gallon
Greywater Cap.	40 gallon
Propane Gas Cap.	2 x 20 lbs
Hitch Weight	428 lbs
Axle Weight	4170 lbs
Total Dry Weight	4600 lbs
GVWR	6000 lbs
Ball Height	23.5" when loaded

HIGHLIGHTS INCLUDE

 **24'7" TRAVEL TRAILER**
24'7" L X 8' W X 8'10" H

 **4600 LBS**
DRY WEIGHT

 **6000 LBS**
GVWR

 **4 PEOPLE**
SLEEPING CAPACITY



Escape 21



Escape 21

The Escape 21 Classic reigns as the lightweight trailer champ, adored by Epic Escapers for its airy feel and cozy comforts.


But if you crave that classic 21-foot vibe with a bit more breathing room, say hello to the 21NE. Offering two floor plan options and customizable features, it's the spacious upgrade you've been dreaming of. And don't fret about storage – we've got secret compartments tucked away everywhere you look.

Exterior Length (add 6" for spare tire)	21'4"
Top of Open Maxx Fan	8'10"
Exterior Width	7'4"
Interior Height	6'3"
Interior Length	17'4"
Freshwater Cap.	28 gallon
Blackwater Cap.	22 gallon/13.2 gallon
Greywater Cap.	28 gallon
Propane Gas Cap.	2 x 20 lbs
Hitch Weight	366 lbs
Axle Weight	3099 lbs
Total Dry Weight	3465 lbs
GVWR	5000 lbs
Ball Height	19" when loaded

HIGHLIGHTS INCLUDE

 **21'4" TRAVEL TRAILER**
21'4" L X 7'4" W X 8'10" H

 **3465 LBS**
DRY WEIGHT

 **5000 LBS**
GVWR

 **4 PEOPLE**
SLEEPING CAPACITY

Escape 19



Escape 19


The E19 is practically begging to be made into your dream trailer.

With two open-design floorplans, the ability to sleep up to five people, and options like a compressor fridge, a convection oven, and a composting toilet. Oh, and did we mention it's still incredibly lightweight?


Exterior Length (add 6" for spare tire)	19'6"
Top of Open Maxx Fan	8'10"
Exterior Width	7'
Interior Height	6'3"
Interior Length	15'8"
Freshwater Cap.	28 gallon
Blackwater Cap.	13.2 gallon
Greywater Cap.	28 gallon
Propane Gas Cap.	2 x 20 lbs
Hitch Weight	306 lbs
Axle Weight	2944 lbs
Total Dry Weight	3150 lbs
GVWR	4400 lbs
Ball Height	19" when loaded

HIGHLIGHTS INCLUDE

 **19'6" TRAVEL TRAILER**
19'6" L X 7' W X 8'10" H

 **3150 LBS**
DRY WEIGHT

 **4400 LBS**
GVWR

 **5 PEOPLE**
SLEEPING CAPACITY

Escape 17



Escape 17

The E17 might be the baby of the bunch from a size perspective, but it still packs a punch.

For those who travel to harder-to-reach locations, the E17 gives you the chance to transition from tents. The E17A does not have a bathroom but does have beds and a kitchen, while the E17B includes a full wet bath and three floorplan options.

Exterior Length (add 6" for spare tire)	17'8"
Top of Open Maxx Fan	8'6"
Exterior Width	6'8"
Interior Height	6'2"
Interior Length	13'8"
Freshwater Cap.	20 gallon
Blackwater Cap.	13.2 gallon (17a excluded)
Greywater Cap.	26 gallon
Propane Gas Cap.	2 x 20 lbs
Hitch Weight	256/296 lbs
Axle Weight	2034/2344 lbs
Total Dry Weight	2290/2640 lbs
GVWR	3500 lbs
Ball Height	18" when loaded

HIGHLIGHTS INCLUDE



17'8" TRAVEL TRAILER
17'8" L X 6'8" W X 8'6" H



2290/2640 LBS
DRY WEIGHT



3500 LBS
GVWR



4 PEOPLE
SLEEPING CAPACITY

IT'S TIME TO **ESCAPE CAREFREE**

You'll often hear people say "form over function", or vice versa.
We disagree. Why not have both?

Escape Trailers are light on their axles, mini-fortresses on the outside,
and feel like cozy cabins on the inside. Function or form?
When you've been doing this as long as we have,
you don't need to choose between the two.



THIS IS NOT YOUR TRADITIONAL DEALER EXPERIENCE.

We design, build and stand behind our trailers - and we want you to hear about the **real experiences** of other owners as part of your buying journey. Our customers value quality, low



maintenance and customization, making the decision to invest in an Escape an informed one. With our leak-resistant, single-piece fiberglass shell trailers, we provide a product tailored to the high standards our customers.

These aren't sales pitches; these are real life experiences.

See a trailer with someone who actually owns an Escape. With over 1,400 Escape Club Members spread throughout North America you can easily book an in-person tour located near your hometown

SEE A TRAILER, MAKE A FRIEND.



BASE FEATURES

No two Escapes are built the same, but the foundation of every trailer – what makes it lightweight, durable, and comfortable – is rooted in the same core pieces. When you buy an Escape, you're guaranteed to have these features along with any customizable options or upgrades you choose.



CHASSIS

- 3500 lb Torsion Rubber Ride Suspension
- Balanced 15" Radial Tires & Steel Rims (8 ply)* (E17 has 14")
- Full Size Spare Tire with Cover
- Self-adjusting Electric Brakes
- EZ-Lube Axles
- Front & Rear Stabilizer Jacks (rear only on E5.0)
- 2 Independent Power Landing Gears (E5.0 only)
- Safety Chains (E5.0 excluded)
- Break-Away Switch



EXTERIOR

- Manual Awning*
- Thermal Double-Glazed Framed Windows with Bug Screens*
- Thermal Acrylic Windows with bug screens are standard on E23
- Front Window with Rock Shield (Non-thermal) (E5.0 excluded & not standard on E21C)
- Thermal Acrylic front window without rockshield standard on E23F1 and E23F3
- Dual 20 lb. OPD Propane Tank with Auto Change Regulator & Cover
- Propane Quick Connect
- Sewer Hose & Storage Compartment
- Winterizing T-Valve
- LED Exterior Porch Lights*
- Exterior Bubble Levels
- Exterior Access Hatch* (E17, E23F2 excluded)
- Exterior Grab Handle
- Single Entry Step**
- Mud Flaps
- 2" Bike Rack Receiver (150 lb- 200 lb Capacity)

♦ Excluded E23

■ Standard on E23

* Item Available for Optional Upgrade

INTERIOR

- 12,000 BTU Furnace
- Propane Hot Water Tank*
- Refrigerator*
- 2 Burner Flush Mount Stainless Steel Cooktop with Glass Cover*
- Stainless Steel Sink, Faucet & Formica Sink Cover
- Power Range Hood Vent with Light
- 12V Demand Water System
- Microwave Ready Cabinet* (excluding E19)
- Foot Flush Toilet (E17A excluded)
- Toilet Shut Off Valve (for ease of maintenance)
- Wrap Around Overhead Compartments
- Under Seat Storage
- Kitchen Window Over Sink (E21C, E21NE, E5.0 & E23 only)
- U-Shaped Dinette (standard in E21NE only)
- Screen Door
- Draw Down Window Shades with Valances♦
- Integrated window shades in E23■
- 4" High Density Cushions
- 8" Plush Mattress (in permanent Bed locations, except E23F3 has foam mattress at 9")
- Power Bathroom Vent (E17A excluded)
- Fiberglass Enclosed Bathroom w/ Shower (E17A excluded)
- Recessed Mirrored Medicine Cabinet (E17A excluded)
- Monitor Panel with Holding Tank Level Indicator & Battery Strength Indicator

PERSONALIZATION

- Custom Oak (Special Order), Maple, or Contemporary Interior (E23 Maple or Contemporary Only)
- Formica Counter & Tabletops – 7 choices*
- High Grade Sheet Vinyl Flooring – 7 choices*
- Fabric for seats and cushions – 7 choices*



ELECTRICAL

- 55 Amp Converter/Battery Charger (E23 80 Amp■)
- 12V Deep-Cycle Lead-Acid Battery**
- 25'-30 Amp Power Cord**
- 120V Interior Outlets*
- Battery Isolator Switch
- 120V Exterior Outlet
- 12V/USB Interior Outlet*
- LED Interior & Exterior Lighting*

SAFETY/FIRE

- Carbon Monoxide/Smoke Detector
- Fire Extinguisher
- Oversized Emergency Exit Window

OPTION CHOICES

Escape empowers you to shape your trailer to your journey, reflecting your unique style and vision.



OFF GRID POWER

- Dual 6V Lead-Acid Batteries ♦
- Lithium Ion Batteries –100Ah (up to four available)
- Lithium Battery Ready ▣
- 1500W Inverter (Includes Transfer Switch and all Outlets)♦
- 200W Solar Panel with MPPT Controller Display ▣
- Additional 200W Solar Panels (E17 excluded) ▣*
- Prewire for Solar with Roofmount MC4 Connector ♦
- Solar Port wired to Charge Controller



COMFORT

- Removable Power Cord ▣
- Electrical Management System with Surge Protector ▣
- 11,000 BTU Air Conditioner with Digital Thermostat
- 13,500 BTU Air Conditioner with Bluetooth Compatibility (E17 excluded)
- 13,500 BTU Houghton Air Conditioner
- Two-way Hot Water Tank (Propane & 120V) ▣
- Springfield Marine Pedestal ▣
- Wireless Back-Up Camera (Display Monitor wired with 12V plug)
- LED Captain's Reading Lights ▣
- 2nd Maxx Fan



BATHROOM

- Composting Toilet (E17A excluded)

KITCHEN

- ENO 3 Burner Cooktop
- Oven w/ flush mount 3-Burner Cooktop (E17 excluded)
- Stainless Steel Backsplash in Kitchen (rear of countertop only, not side)♦
- Elkay Quartz Luxe Sink (E17 excluded)
- Microwave Built into Cabinet
- Convection Microwave Oven (E17 excluded)
- Compressor Fridge (E17 excluded)

EXTERIOR

- Body Lift Kit ▣
- Lippert Solid Step double step (replaces standard Single Step) (E17 excluded)▣
- Exterior Shower (Driver and/or Passenger Side)(E17 DS only)
- Aluminum Rim Package (Includes Tires and Rims)
- Power Awning (LED Light Strip included)
- LED Awning Light Strip for Manual Awning
- Power Tongue Jack (E5.0 excluded)▣
- Spray Foam Insulation for Under Trailer with or without 2 × 12V Heat Pads
- Exterior 12V/USB Outlets
- Exterior Access Hatch ♦E23F2
- Front Storage Box (E5.0 excluded)
- Additional Exterior LED Light▣

AUDIO/TV

- Stereo with Speakers (Bluetooth/FM/AM/ CD/DVD/USB)
- TV/Cable Ready with 120V Outlet (does not include TV)
- TV Antenna (includes TV/Cable Ready with 120V - does not include TV)

INTERIOR

- Custom Fabric, Formica and Flooring
- Additional 12V/USB & 120V Interior Outlets♦
- Additional Counter Extensions
- Retractable Wall Hooks (3 Hooks per set)
- Modify Walls to be Reinforced▣
- Cot or Cot Ready (E19 & E21NE only)
- Gaucho Bunk (E17B F1 & F2 plans only)
- Additional Shelves in Wardrobe Closet
- Drawer under Wardrobe Closet (E19 and E21NE Only)
- Cabinet Door at End of Dinette Bench (E19 and E21NE Only)

WINDOWS

- Frameless Windows (includes Split-Opening Rear Window) ♦
- Frameless Split-Opening Rear Window ♦
- Window in Bathroom (opening, Framed or Frameless where applicable) ♦
- Window in Kitchen (opening, Framed or Frameless where applicable) ♦
- Front Window with Rock Shield (option on E21C) ♦



♦ Except E23

▣ Standard on E23

* Item Available for Optional Upgrade

ESCAPE | BUILT FOR YOU

Escape Trailers offers a variety of personalized floor plans, ensuring every customer finds their ideal fit. Whether you're a solo traveler, a couple, or a family, our options cater to your specific needs and preferences.

Escape 5.0



Escape 23



Escape 21C



Escape 21NE



Escape 19



Escape 17B



Escape 17A



PERSONALIZE YOUR ESCAPE

Whether you want your Escape to feel like a cozy cabin in the woods, a sleek downtown apartment, or an old-school hippie van, we can make it happen. With multiple different options, you can design your trailer to be the exact living space you need. If you don't see anything you like below, have no fear: any special requests for unique finishes, materials, and designs can and will be fulfilled during your build.

CABINETRY

Choose from Oak, Maple or Contemporary options.

Please note:

Both Maple and Contemporary cabinet options come with clear frosted acrylic inserts for the upper cabinet doors.



Maple



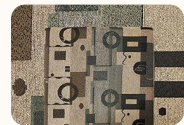
Contemporary



Oak
(Special Order)

FABRIC

Choose from our selection of seven standard fabric choices or supply a custom fabric from your own source.



Kelso Champagne



Chinchilla



Valour Chocolate



Tenacity Harvest



Monroe Steel



Summit Ash



Symmetry Tida

COUNTERTOPS

Choose from our seven standard countertops or choose from a range of Formica laminate options as well.



Mineral Jet



Elemental Stone



Butterum Granite



Flax Gauze



Portico Marble



Silver Quartzite



Silver Shalestone

FLOORING

Choose your high-grade vinyl flooring from our seven standard choices or make an optional choice.



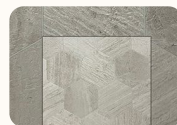
New Castle
Knights Armor



Havana Tobacco



Shadow Grey



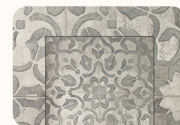
Hive Pollen



Tapestry Denim



Colorado Canyon



Filigree Pewter

All sample swatches shown are for illustration purpose only. Actual product may vary.

If you ever need anything, don't hesitate to call. Dial up 1-855-703-1650 to speak to us directly. We'd be happy to hear from you.

If you're ready to become an Epic Escaper, visit our website at escapetrailer.com. You'll find more information about the trailer you're interested in, the customization options that come with it, and how to start the process of building and owning a trailer.

It's time to take that first step.
The memories are waiting to be made.

ESCAPE CAREFREE

Proudly Built in
British Columbia Canada

Limited 2 Year Warranty
Manufacturer Direct Pricing
Superior Quality and Longevity
Excellent Resale Value
Industry Leading Personalization

1.855.703.1650
escapetrailer.com

      @takeyourescape

All content & images. ©2023 Escape Trailer Industries

Escape TRAILER

1.855.703.1650
escapetrailer.com

